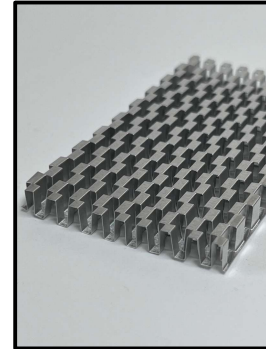


Thermal Management

Heat Sinks

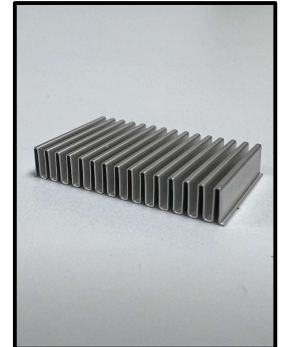
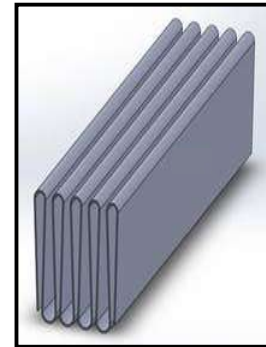
Mesh Folded Fin

Material Thickness	0.05 - 0.5 mm
Fins per Inch	4 FPI – 40 FPI
Fin Height	1.0 – 20 mm
Flow Length (Slit Width)	10 – 600 mm
Cutoff Length (Flow Width)	Any Length



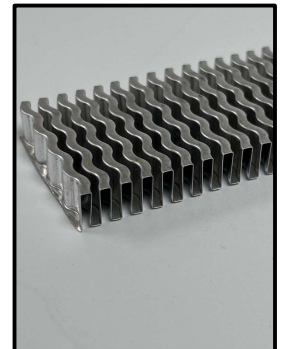
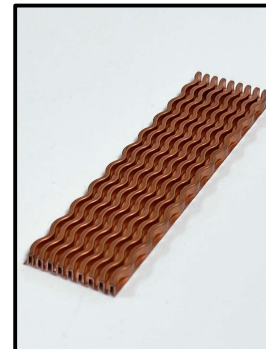
Straight Folded Fin

Material Thickness	0.05 - 1.0 mm
Fins per Inch	2 FPI – 50 FPI
Fin Height	0.5 – 25 mm
Flow Length (Slit Width)	3 – 600 mm
Cutoff Length (Flow Width)	Any Length



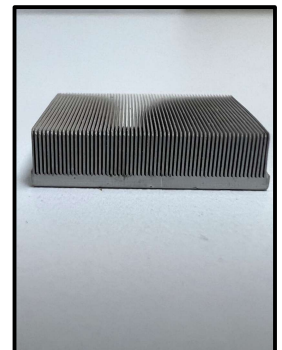
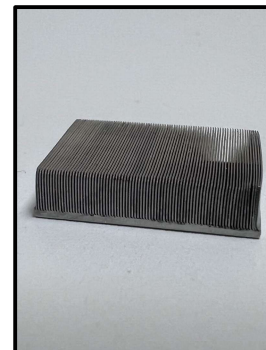
Wavy Folded Fin

Material Thickness	0.05 - 0.5 mm
Fins per Inch	2 FPI – 50 FPI
Fin Height	2.0 – 25 mm
Flow Length (Slit Width)	5 – 600 mm
Cutoff Length (Flow Width)	Any Length



Skived Micro Finned

Unique Shapes / Small Size Capability
Improved Surface Area
Superior Thermal Conductivity
Potential for direct mount to PCB
Copper / Aluminum



Material options

Aluminum, Copper, SST, Inconel Super Alloy, and Others